

Live the way you are – naturally individual:  
**UNILUX aluminium clad wood windows**



ALUMINIUM CLAD WOOD WINDOW OVERVIEW



WHERE QUALITY IS AT HOME



Live the way you are – naturally individual: UNILUX aluminium clad wood windows



# Contents

UNILUX: Where quality is at home	4-5
All good things come in sixes: Brand advantages of UNILUX	6-7
Advantages of mixed materials	8-9
UNILUX aluminium clad wood windows series DesignLine	10-13
UNILUX aluminium clad wood windows series ModernLine	10-13
UNILUX aluminium clad wood windows series LivingLine	10-13
UNILUX aluminium clad wood windows series DesignLine Privacy	14-15
UNILUX aluminium clad wood windows frames for renovation	16-17
UNILUX basic advantages and UNILUX optional advantages	18-19
Freedom of design in terms of material and color	20-21
Glass competence and security	22-23
Unlimited variety of shapes, handles, shades and screens	24-25
The unique UNILUX MAXXIGLASS gallery	26-39
The reliability of a big name	40-41



Live the way you are – naturally individual: UNILUX aluminium clad wood windows







UNILUX

---

# One brand. One promise.

---

The only thing modern-day windows have in common with their "ancestors" is their name. Good carpentry work and appearance alone is no longer enough, because energy efficiency, safety, and functionality standards have increased dramatically to meet today's customer needs.

That's why all UNILUX aluminium clad wood products are in-house developments, demonstrating an extraordinary degree of product intelligence and complex engineering.

**To ensure these masterpieces are not just available to a selected group of people, UNILUX produces them as series, enabling these unique aluminium clad wood products to be sold at prices which make top quality affordable.**

**UNILUX – where quality is at home**

## All good things come in sixes:

# The UNILUX brand advantages

### Brand advantage 1: Durability

Ever since its early days, UNILUX has always used the highest-quality materials. Down to the finest detail: instead of the inferior silicon, we use smooth glazing seals made from synthetic rubber. The high-quality workmanship and strict quality controls ensure you gain long-term enjoyment from your UNILUX window.

### Brand advantage 2: Freedom of design

Tastes are subjective. That's why you can choose from three designs (LivingLine, ModernLine, DesignLine), five fine woods (pine, oak, alder, larch and exotic wood), 187 wood finishes, 2,132 different aluminium colors/patterns, 34 handles and several double-pane and triple-pane glass types. And let's not forget: the most diverse window shapes (they don't always have to be square), and, upon request, true divided, simulated divided and internal grids in various sizes and styles.

### Brand advantage 3: Energy efficiency

UNILUX's solid construction style not only guarantees durability, but also help save energy. Each of our aluminium clad wood products has state-of the-art „warm-edge“ spacers between the glass panes, ensuring better thermal values, greater comfort near the window, and significantly reduced condensation build-up during colder months. Heating costs can be further reduced through highly efficient triple-pane glass with a thickness of at least 11/2"/40 mm (SuperThermo3, UltraThermo3, ThermoWhite3).







### **Brand advantage 4: Safety**

Sometimes a window's job is not just to keep out wind and rain, but also uninvited guests. That's why all UNILUX locking parts are made from high-quality materials. Mushroom pins are also a standard feature of all our aluminium clad wood window fittings. For maximum protection, we offer the SAFE range (with the option of P2A laminated safety glass, DIN-certified by the German National Authority on Fire Arms and Ammunition) and special alarm systems.

### **Brand advantage 5: Service**

UNILUX only works with expertly qualified window specialist retailers, located across the country with their own showrooms. Your regional UNILUX retailer will offer you detailed advice and assist you with your plans. It will also ensure prompt, correct installation, and will be available at any time if you have any service-related needs.

### **Brand advantage 6: Brand quality**

Since 1955, UNILUX's philosophy has been: Only products of uncompromising quality must leave the factory. This saw our company become a recognised quality leader over the decades. Anyone who pays heed to the UNILUX logo can be certain of always receiving a "Made in Germany"-branded product.

Live the way you are – naturally individual: UNILUX aluminium clad wood windows





## ADVANTAGES OF ALUMINIUM CLAD WOOD

---

Aluminium on the outside,  
pure wood on the inside –  
combined for generations.

---

Wood creates comfort – it is a feel-good material. Aluminium on the other hand, is a robust protective shield against the elements. Together, they form an aluminium clad wood product which lasts generations without the need for continuous maintenance.

**The wood interior does not require UV protection in the form of colouring pigments in the finish. It can be used in its natural form (transparent stain) thanks to the aluminium shell. The aluminium shield firmly encases the wood, protecting it from the elements while still giving room to expand and contract and cope perfectly with temperature fluctuations.**

**UNILUX aluminium clad wood products: THE ORIGINALS.**

## Aluminium Clad windows

Discover the world of UNILUX

# PASSIVE

No fine print, no compromises, no exceptions.

With every UNILUX aluminium clad window you obtain a passive house star no matter the type of design. DesignLine, LivingLine or ModernLine, all series meet the stringent passive house windows criteria.

**Passive House Stars – built to save energy.**





# E HOUSE

## UNILUX DesignLine 0.8

UW VALUE  
**0.8**  
W/m<sup>2</sup>K

The attractive way to save on energy costs (heating or cooling). The DesignLine aluminium clad wood window range combines architectural elegance and state-of-the-art energy efficiency. Uncompromising in terms of aesthetics, it is designed for high-quality residential buildings and condominium buildings.

## UNILUX DesignLine 0.7

UW VALUE  
**0.7**  
W/m<sup>2</sup>K

Energy savings at the highest level. Thermal value improves by 46% compared to a standard windows. This is made possible by a special impermeable core, gas-filled triple-pane glass, "warm-edge" spacers, double-sided (invisible) low-e-coating and a total glass thickness of 17/8"/48 mm.

## UNILUX ModernLine 0.8

UW VALUE  
**0.8**  
W/m<sup>2</sup>K

Modern architects have selected this series. The aluminium clad window range of the ModernLine gets by with its straight lines and its clear, straight lines, they are perfect for contemporary houses and buildings in the city flair.

## UNILUX ModernLine 0.7

UW VALUE  
**0.7**  
W/m<sup>2</sup>K

Three glass panes with a thickness of 6 mm (2"), a custom insulating core, gas-filled spacers, and invisible low-e-coating on both sides improve insulation compared to conventional windows.



# ★ STARS

architectural clas-  
sified as ideal for  
the aluminium  
type Modern-  
without embel-  
lishment. With  
are perfect for  
buildings with a

panes with a  
nearly 5mm  
m-designed in-  
te, thermally iso-  
s, special filling  
invisible coating on  
values by 46%  
windows.



## UNILUX LivingLine 0.8

UW VALUE

**0.8**

W/m²K

Some things never need to change. The aluminium clad windows in the LivingLine series are so discreet that they fit harmoniously into any traditional architecture, and are very attractive when renovating older buildings as well.

## UNILUX LivingLine 0.7

UW VALUE

**0.7**

W/m²K

In addition to a third glazing layer for a glass thickness of almost two inches, the LivingLine 0.7 has a custom-designed insulating core, special filling gas, invisible coating on both sides, and thermally isolated spacers. This makes its thermal insulation 46% better than a standard window.





# The key-values of our PASSIVE HOUSE STARS

---

The secret of every Passive House Star is created by our encouraged engineers and developers. By affecting the smallest detail in construction they are able to reduce thermal loss.

The question 'How' can be seen in every window. Innovations that aren't even visible make the difference. The performance of our windows' design is what inspires our customers day by day and what makes us call them 'Stars'.



## Aluminium clad wood windows

# DesignLine Privacy

"My home is my castle." Just block the world out. Be undisturbed, footloose and fancy free. This is easy with the aluminium clad wood DesignLine Privacy window. Thanks to integrated blinds, you can create privacy at any time – even by remote control if you wish. Also save on energy compared to a roller-shutter or venetian blind box.



### DesignLine Privacy Advantages on 5 levels

#### ✓ 1. Privacy

Discretion could not be more easily achieved. Nothing has to be built, mounted or improvised. The blinds move easily, via remote control if required.

#### ✓ 2. Peace and quiet

Three or even four glass panes mounted some distance from one another enable unrivalled sound-proofing. Test it for yourself and pull the blind up: You'll see the cars but won't hear them.

#### ✓ 3. Warmth

Roller-shutter or venetian-blind boxes are often energy guzzlers. Heat escapes and cold creeps in. DesignLine Privacy gets rid of this airlock. Since the blind is now part of the window, the boxes are no longer required.

#### ✓ 4. Security

When it comes to glazing, UNILUX uses materials such as tempered or laminated safety glass, which is particularly resistant to impacts, effectively protecting against uninvited guests.

#### ✓ 5. Freedom of design

The integrated blind – with your choice of color – offers you a wide range of possibilities. As you don't require shutters, curtains or separately mounted blinds, your freedom of design is greater than ever before.





Try out more comfort.

As an option to the standard chain cord, the blinds integrated into many windows\* can now be operated by remote control from the comfort of your sofa, armchair or bed.



UNILUX DesignLine Privacy



### Internal blind

The energy-efficient alternative to the box above the window. It can be easily adjusted to the sun's position via motor or chain. As it is located inside, it hardly gets dirty, either.



### Easy to clean

The blind sits in front of the insulated glass unit, making the rare cleaning sessions a piece of cake. Simply open the sash, clean it, and you're done!



### Sleek appearance

No frills, no gadgets. The DesignLine models stand for clear, puristic lines. Timeless window design.

\* Depending on the size of the window.



## Aluminium clad wood windows frames for renovation

# The smart way to renovate windows

Window renovation can be so easy! Thanks to the renovation window frame from UNILUX, replacing obsolete windows is child's play. You don't even need to worry about plaster or wallpaper. Everything gets done cleanly and quickly.

Experienced installers manage that by simply removing the sashes of your old windows and cutting off the frame. Then they already have the groundwork laid for your new wood-aluminum window.

You can choose from all the many variants of a DesignLine window. And just like windows for new construction, you have all the different options for design available. For custom windows at lightning speed.

The decisive factor: The skill of installers matches the high quality of our windows. So you can be absolutely certain that your energy-saving DesignLine window with renovation window frames will have the same thermal insulation values as a DesignLine window in a new house. And plastering and wallpapering? They're just as much a thing of the past as masonry repair.

**The renovation window frame from UNILUX –  
new windows, without the stress.**

### New windows, no muss, no fuss.

Clean insertion into the old window frame leaves the masonry and stucco intact, and interior plaster and wallpaper aren't affected either. Even an existing window sill can be cleanly integrated.

The new window fits harmoniously into the existing window opening, from both the visual and technical points of view.



New renovation  
window frame

Old window frame

Masonry and stucco

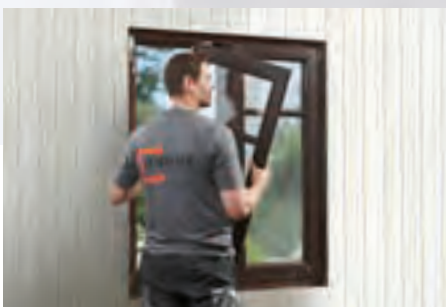


WHERE QUALITY IS AT HOME

UW VALUE  
**0.8**  
W/m²K

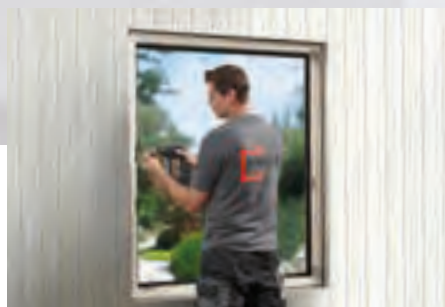


**UNILUX**  
renovation window frames



### Clean

The entire area is cleanly covered and taped before work begins. The old window sashes are removed, and the old frames cut off without leaving dust. They will be used as the foundation of the new window structure.



### Safe

By stable anchoring into the frame and the masonry and by adding foam and insulation, our new windows aren't just visually attractive – they're also attractive when it comes to security and thermal insulation.



### Fast

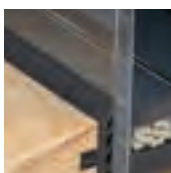
Once the new frame is inserted and anchored, the only thing left to do is simply to mount the new sashes and hardware. And then your room shines in a new light – without the mess, and without the stress.

## Quality as a standard: the basic UNILUX advantages

As you know from buying cars, some models look cheap at first glance. But upon closer examination, you are incredulous at all the extras charged by the manufacturer.

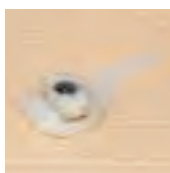
That's not the case at UNILUX. Our basic features in themselves are so extensive, that there is often no need for accessories. Each of our standard aluminium clad wood windows has the following special features:

### Glazing seal



Silicon may be cheap, but it fades easily, is hard to clean, and susceptible to cracks and abrasion. UNILUX uses the better alternative: synthetic rubber, which is easy to clean, fade-resistant, long-lasting and hardly noticeable.

### Aluminium cladding slider couplings



Aluminium contracts or expands more than wood in cold or hot weather, creating tension on the frame. We prevent this from happening by mounting the aluminium cladding on slider couplings – similar to a rail system. This also ensures the wood is properly ventilated at all times.

### Superior-quality wood



Not all woods are the same. To guarantee a consistently high quality of materials, we use our own experienced wood purchasers, even in the most distant of supply countries. The same strict standards are applied during treatment – to ensure the wood has a long and healthy life.

### Security



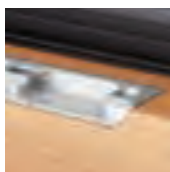
Every standard UNILUX aluminium clad wood window has a mushroom pin in its fittings, which greatly prevents the window from being pried open. All locking parts are also made from high-quality materials, providing added security.

### Aluminium powder coating



"The exterior paint has chipped" is a phrase unfamiliar to UNILUX customers. Because our aluminium clad wood windows are made using aluminium powder coating, which has been tried and tested in the automotive industry. The result is highly robust paintwork able to withstand even the harshest of elements.

### Embedded (recessed) lock keepers



Impressive not only aesthetically, but also from a security perspective – due to being recessed compared to screwed-on locking parts. And the window frames are also easy to clean due to the fact that all the metal parts are recessed/embedded.





## Extra perfect: the UNILUX optional advantages

Special circumstances require special solutions. That's why UNILUX offers exclusive added value when it comes to security, material protection and energy usage.

These additional benefits also give you the peace of mind of knowing you have the ultimate aluminium clad wood windows. Perfection, made by UNILUX.

### Added security: SAFE



We offer special alarm system and SAFE ranges for maximum protection. SAFE II and SAFE III are an affordable and effective way of making things difficult for burglars.

UNILUX provides the right solutions, from the 4-corner security locks – in which sturdy mushroom pins firmly grip the locking parts of all 4 corners of a window sash – to the P2A safety glass. For higher standards, there is also the EN 1627ff-certified security of resistance class 2.

### Plus: Aneloxal coating



It's not just acid rain which can corrode metal. Salty sea air can also have aggressive, negative impacts up to 60 miles/100 kilometers inland – including on stainless steel.

Pre-anodising, – the "aneloxal" process – effectively prevents corrosion. We are one of the very few manufacturers to use this form of coating at customers' requests, thereby ensuring UNILUX aluminium clad wood windows remain a symbol of durability, even in coastal areas.

### Extra warmth: Triple glazing



Triple-pane instead of dual-pane. The additional pane further improves Thermal properties, thereby lowering energy costs, and as the triple pane glass is between 11/2"/40mm and 17/8"/48mm

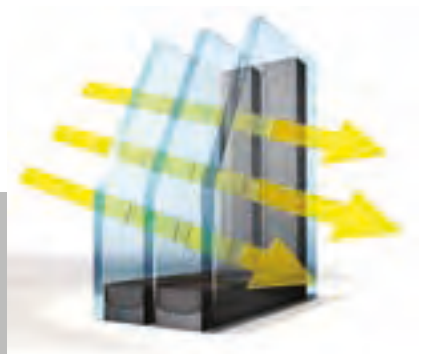
thick, it can also be effectively sound-proofed.

### Solar gain: ThermoWhite3



A 3-pane insulated glazing option which does more than just keep the cold out. Thanks to a new, invisible Low-e coating, you can more intensively utilise the energy from the sun's rays. More solar heat

finds its way into the house. And this coating – combined with the argon gas fill – ensures it stays there.



### Coating for ThermoWhite3

The special coating lets more sun and warmth in.



### Argon gas fill

While the heat "ricochets" around inside and remains in the house, thanks also to the argon gas fill.

## Freedom of design in terms of material and colour

How many different tastes are there? Around 2 million when it comes to wood and color. Because that's how many combination options you have for your individual UNILUX aluminium clad wood windows. Find out which wood species goes best with which color, and which pattern goes with the aluminium cladding.



Exotic wood

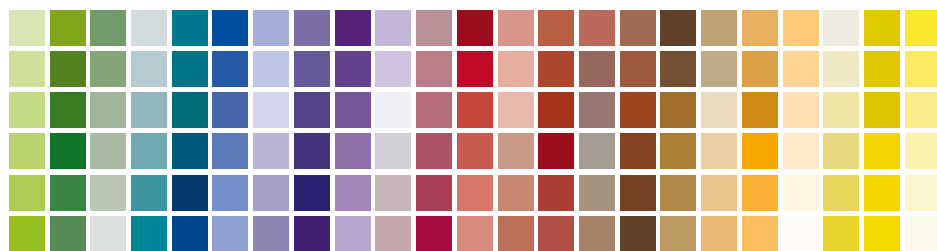


Larch



Pine

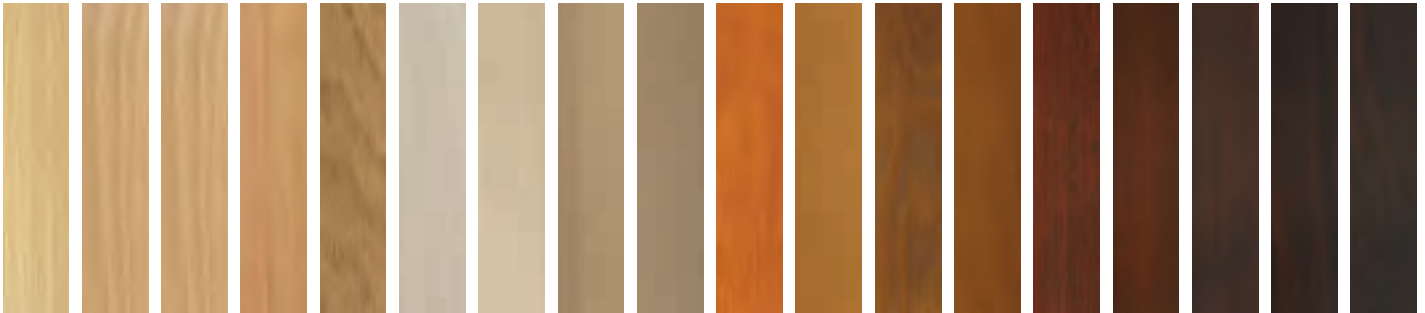
Choose from 5 wood species and 192 colors (167 RAL opaque colors and 25 finishes) for the internal design (the wood species and wood coating), while the outer design (aluminium cladding) has even more options, allowing you to choose from over 2,100 colors and patterns (RAL, NCS, DB, Eloxa (anodized aluminium coating) and white-pigment colors, as well as wood patterns).



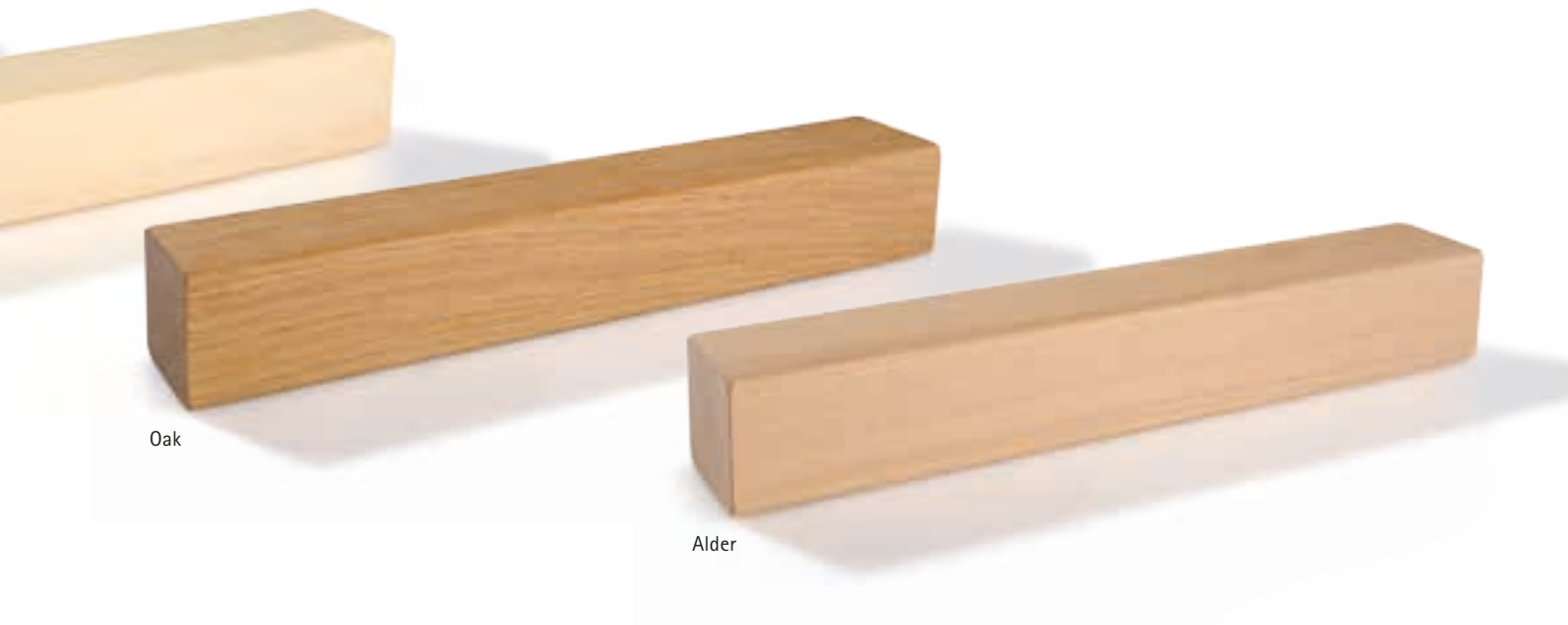
RAL colors  
Wood patterns  
DB & metallic colors  
NCS colors



Colors may vary due to printing.



Choose from the following wood species: Pine, oak, alder, larch and exotic wood, as well as 20 transparent or semi-transparent finishes.



Oak

Alder



### You love wood

Wood is a living material, so it's nice if you can incorporate it into your living space. UNILUX aluminium clad wood windows bring this vitality to your living room.



### Your world is colorful

Colors are an expression of personality and attitude towards life. Show off your taste and choose from a range of colors which leaves nothing to be desired.



### It's your choice

Even when it comes to wood colors, UNILUX always gives you the choice. Select from a wide variety of wood species, and make the most of the options for designing the wood's color scheme.



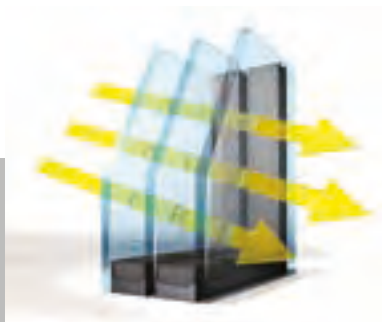


## Glass competence

Every UNILUX window has double-glazed insulating glass. Even this standard version achieves insulation values that are outstanding for any window. But that's not enough for our engineers and developers. For anybody who wants to get serious about thermal insulation, UNILUX also offers triple-glazed insulating glass in a number of varieties.

It's your choice: for example, SuperThermo3, in which the additional layer of glass is barely noticeable in the price. Or UltraThermo3, which uses argon/krypton gas filling to obtain sensational insulation values. Or ThermoWhite3, which not only insulates, but actively makes use of the heat from incoming sunlight.

However you decide, every UNILUX window is an example of groundbreaking glass competence.



### Coating in the ThermoWhite3

The special coating lets more sun and warmth in.

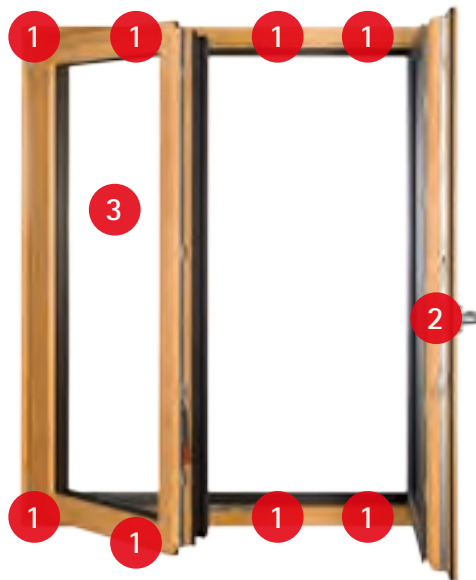


### Argon gas filling

The heat, however, „ricochets“ around inside and remains in the house, thanks also to the argon gas filling.



## UNILUX SAFE package: Make short work of burglars



**SAFE means: safety without compromise**

### 1 Four-corner mushroom-headed locking pins

Burglars often try to lever the window out of the frame. The four-corner mushroom-headed locking pin makes it much more difficult. The pins engage firmly into the strikers – the lever has no point of attack.

### 2 Lockable handle with push-button

Thieves often open the lock by inserting their tool between the window and the frame. The locking button prevents that. The window can only be opened if the locking button inside is pressed – too bad for crook, who stays on the outside.

### 3 Tested P2A laminated safety glass

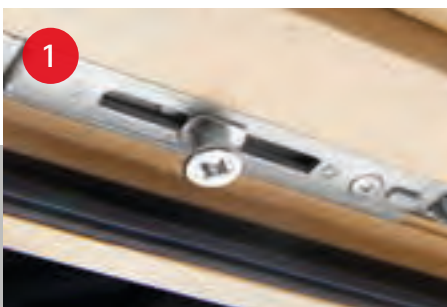
Too strong for a hammer, P2A safety glass has been tested by the German National Authority on Firearms and Ammunition. Thanks to a specially developed, highly crack-resistant PVB film, it even stays intact when the glass breaks.

### 1 2 3 Certified safety RC2 or RC2 N acc. to EN 1627 ff

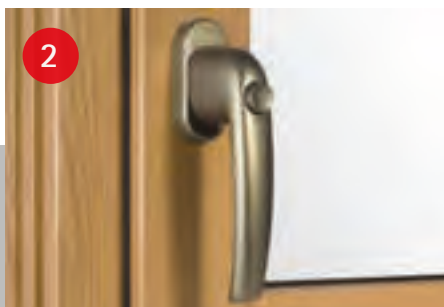
For extra security, Unilux can offer the EN – tested safety class RC2/RC2 N. Along with a specially configured safety hardware, you get high-quality P4A safety glass\*, a lockable handle, and a reinforced special joint between glass and sash which prevents from burglary much more effectively.

Furthermore, a particularly more robust fixing of the aluminum cladding to the carefully selected wood is given. With this combination of features UNILUX windows have been intensively tested by neutral test institutes.

\*(mandatory for RC2, for RC2 N the glass is free to choose.)



Four-corner mushroom-headed locking pins



Lockable handle with push-button



Tested P2A laminated safety glass

## Endless variety of shapes

There are practically no limits when selecting the shape of your aluminium clad wood windows. Triangular or circular window? Sectional or semicircular arch? With or without SDL or TDL bars? Your specialised UNILUX trade partner will show you what's possible.



## A handle on design

Design you can grab: Every UNILUX handle is not only a solid piece of "Made in Germany" workmanship, but also a visual gem. A tool enabling you to express your taste and style.



Standard handle  
silver colors

Standard handle  
steel colors

Standard handle  
bronze colors

Standard handle  
white

Stainless steel handle  
angular shape

Stainless steel handle  
L-shape

Stainless steel handle  
U-shape



# Shades and screens

There are different options for protection from intensive sunlight and curious eyes. Whether classical roller shutter, elegant Venetian blinds, or traditional aluminum shutters, UNILUX offers you your individual shade and screen solution. By the way, we have a few good recipes against insects, too.

## Venetian blinds



Blindingly bright or pitch dark? Venetian blinds give you many more nuances than that. They can control incoming light on a continuous basis. The strips, with their adjustable tilt, allow you to determine exactly how much sunlight you let into your rooms. And the Venetian blind also has an excellent visual appearance.

## Roller shutter



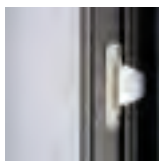
When it comes to blocking out light, roller shutters have been the benchmark forever. No wonder they're preferred for use in bedrooms. And since the box appearance is the same as for our venetian blinds, you can combine UNILUX roller shutters and Venetian blinds together harmoniously.

## Shutters



There are things that trends and fashion simply can't change. Because their beauty is timeless. UNILUX shutters add value to any country home or city villa. And since they're made of aluminum, they have no problem fending off rain and storm. For life-long pleasure in comfortable aesthetics.

## Insect protection



It's not just in bedrooms that insects are a bother. Biting flies and wasps can rob your enjoyment of the fresh air. So you can still air out without the worries, there are special clamping frames and rotating doors. You can easily mount these insect screens yourself. Comfort is so easy.



Every house facade is different. That's why UNILUX lets you select from different box variants when it comes to privacy protection.

For new construction we recommend plaster base variants, because roller shutters or Venetian blinds are then integrated into the external stucco. There is no break in the masonry in this case – no thermal bridge, meaning less energy consumption.

Good to know: For boxes with exterior service-access, you can put up wallpaper inside with no worries – the visually bothersome access-cover disappears.



**Contour roller shutter**  
Reduced design  
through edged visuals



**Round roller shutter**  
Round visuals,  
specifically eye-catching



**Plaster variants**  
Behind the stucco –  
nearly invisible.



## Variety of bars and dividers

Divided lights are the icing on the cake when it comes to a window's appearance. Our range covers four different lines, from true divided and simulated divided lites to the astragal and georgian bar designs.



## Lockability

Not every window needs to be opened, especially when there are small children around. That's why most of our handles come with a lock button, and are also available as lockable variants. Just in case.



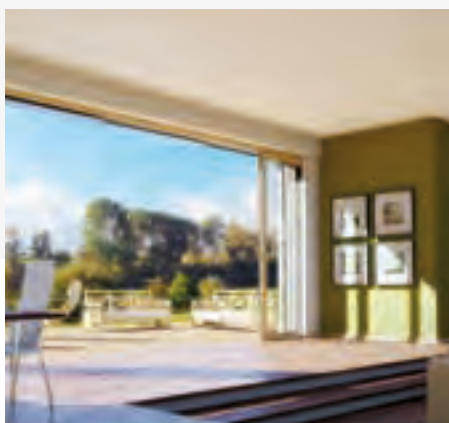
## Sunshades and more

At UNILUX, we have folding shutters, first-class roller shutters, and insect screens that are either built into the roller shutter box or act as a separate component.

The unique UNILUX

MAXXi

GALLERY



# GLASS

For unlimited vision and new spheres of experience.





## Full-glass corner window

# OpenView

The dream which comes true.

OpenView allows you to gaze far into the distance – without any interfering window frames in the corner. Uninterrupted views for as far as the eye can see.

### Technical masterpiece

Completely transparent, but based on a sophisticated UNILUX structure. The two conjoined symmetrical stepped-edge glass panes contains invisible insulation which effectively minimises condensation build-up. The black strip distinguishing the glass corner is made from high-quality enamelling which looks like it is crushed in the glass, meaning only a shadow gap is visible. Typical UNILUX – the mastering down to the finest detail.

### Freedom of design

Whether as a strip of tall windows or a large glass field, OpenView adds value to modern, high-quality architecture. Of course, this impressive structural feature comes in wood species, contours, wood colors and external colors which blend in perfectly with the UNILUX aluminium clad wood windows. It is also available with energy saving triple-pane glass, upon request.





### Maximum performance

Both in terms of energy and architecture: The symmetrical corner is connected via two stepped-edge glass panes, allowing the glass behind them to be insulated in a virtually invisible manner.



### Safety glass

The standard tempered safety glass (with seal) ensures firmness and optimised load distribution.



### Slender profile

The filigree design enables maximum transparency. Aesthetics and robustness become one thanks to the safety glass.



## Lift/Slide system

# PocketDoor

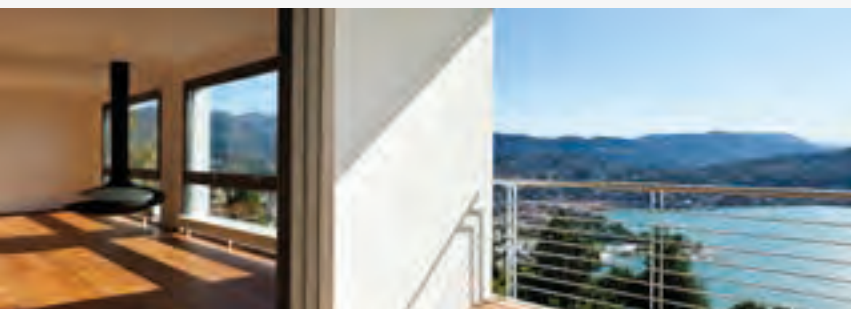
The disappearing door. The panels of the PocketDoor can be fully slid into a pocket in the wall, rendering them invisible. This makes it possible to have up to 30'9 meter wide openings and over 269 sq ft/25 sqm open spaces – for maximum brightness and fascinating possibilities for design.

### Fluid transition

The lack of a conventional threshold – there are only tiny, barely noticeable tracks – means the interior and exterior flooring can be seamlessly fit into one another, posing no obstacle when you walk in or out.

### Architectural freedom

The trend-setting PocketDoor was created for sophisticated, state-of-the-art architecture. It stands for pure living elegance, tailored perfectly to the UNILUX aluminium clad wood windows. Also available with energy saving triple-pane glass upon request.







#### Seamless connection

The countersunk tracks of the UNILUX PocketDoor can be seamlessly integrated into the flooring.



#### Invisible

The UNILUX PocketDoor can be fully and invisible hidden in the special pocket. For an open-plan feeling.



#### Up to 30'/9 meter of freedom

Using up to 6 door panels, which can seamlessly disappear into one or two wall pockets, creates an amazing feeling of space.

## Lift/Slide system

### HS

The classic model in its most convenient form. With the lift/slide system, you'll see how sliding becomes gliding. A simple panel movement creates an opening approximately 10'3 meter wide and 9'2.8 meter high.

#### Exemplary craftsmanship

The lift/slide system perfectly demonstrates nature of UNILUX's products. High-quality hardware and solid constructions enable long-lasting elements which ensure maximum views and grand openings.

#### Freedom of design

Easy on the eye: The lift -slide system comes in wood species, contours, wood colors and external colors which blend seamlessly into the UNILUX aluminium clad wood windows. With energy saving triple-pane glass, upon request.







#### A handle on everything

Thanks to a practical recess and solid handle, the panels can be easily moved both inside and outside. The system also comes in a lockable version.



#### Low threshold

Depending on the architecture, the threshold can be integrated into the floor for an almost fluid transition.



#### Shared sash profiles

Design from the same mould: The sash profiles of the lift/slide system are tailored to the entire UNILUX line.



## Bi-Fold (sliding-folding) system

### Exterior

There are no obstacles here. You don't need to move any plants or standard lamps, because the door panels fold outwards, creating an opening up to 25/7.7 meter wide and 9'/2.8 meter high. And a nice benefit: If you open the door after a rain shower, the water automatically drains to the outside – leaving everything dry inside.

#### Exemplary durability

The bi-fold door perfectly demonstrates the stable and durable nature of UNILUX's products. Aluminium is used as the base material and wood as the cladding, creating a high degree of rigidity in one element, in which everything fits perfectly together.

#### Freedom of design

Easy on the eye: The bi-fold door comes in wood species, contours, wood colors and external colors which blend seamlessly into the UNILUX aluminium clad wood window line (including energy saving triple-pane glass). Even the external handle can be matched to the unit's exterior color. And upon request, the bi-fold door is also available with embedded threshold.





### Seamless connection

Depending on the architecture, the panels' castors can be integrated into the floor – forming the basis for a flat sill track and fluid transition.



### Freedom of interior design

As the panels open outwards, you don't need to create any space for them inside. And when they are opened, raindrops land on the terrace instead of the floor.



### Handles

Practical when you want to get out quickly. Depending on how the elements are divided, a standard door handle can be installed (in the same color as the element's exterior).

## Facade system (Curtain Wall)

### FineLine

The name's the game. FineLine is distinguished by its slender yet solid post & beam construction. The sophisticated connection technology allows even tricky architectural tasks to be mastered with maximum quality.

#### Exemplary strength

UNILUX only uses solid, laminated wood protected by a weather-proof aluminium cladding, which also holds the glass panes in place. These robust materials, as well as the sophisticated, invisible connection technology for posts and beams, ensure maximum stability even for large façades extending beyond one floor.

#### Freedom of design

Easy on the eye: The large glass areas enable personalised interior design. The slender, elegant FineLine façade comes in a variety of wood species and colors, contours and aluminium exterior colors, which blend seamlessly into the UNILUX aluminium clad wood window lines. Available with energy saving triple-pane glass, upon request.





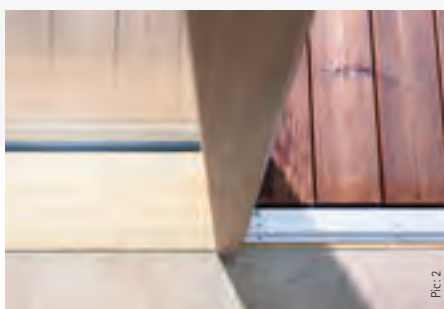


Pic: 2



### Energy efficiency

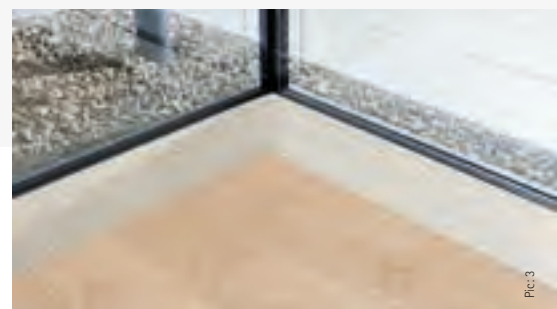
Optimum U-value according to passive house standards is achieved, thanks to the thermally insulated construction. The heat stays in and the cold stays out.



Pic: 2

### Aesthetics

Solid wood, perfectly presented. The base connection with post-and-beam profile is just one example of the importance UNILUX places on high-quality architectural solutions.



Pic: 3

### Workmanship

Closer inspection please. Examining details reveals just how much precision work goes into each UNILUX product.

## Large-scale door

# JumboLine

High window elements are increasingly popular. It's good when balcony doors can keep up. While the standard balcony door gives out after 2.60 meters (8'-6"), our JumboLine balcony doors can manage heights of up to 3 meters (10'). The key are the massive PowerHinge hinges, which can manage loads of up to 300 kilograms.

## Harmony in completion

Engineering and aesthetics make a harmonious couple. For example, the sash limiter which prevents the panel from excessive opening is only visible when the door opens. The structural glass and securely anchored hardware ensure maximum stability – the panel is easy to operate even after many years.

## Seamless integration

The JumboLine is available in all the aluminium clad designs, aluminium colors, wood species and finishes of the standard aluminium clad wood windows.







PIC 4



PIC 5



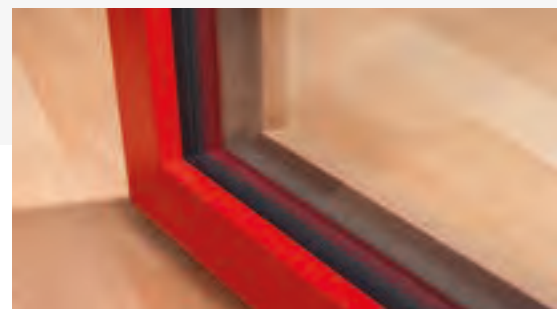
### Strong hardware

Thanks to solid door hinges, even heavy panels (as a standard up to 385 lbs/175 kg, with PowerHinge up to 660 lbs/300 kg) are a piece of cake for this large door. And a durable construction ensures long-lasting use.



### Invisible sash limiter

To protect the hinges, standard JumboLines have a build-in, invisible turn restrictor which automatically stops the door from opening beyond a 90° angle.

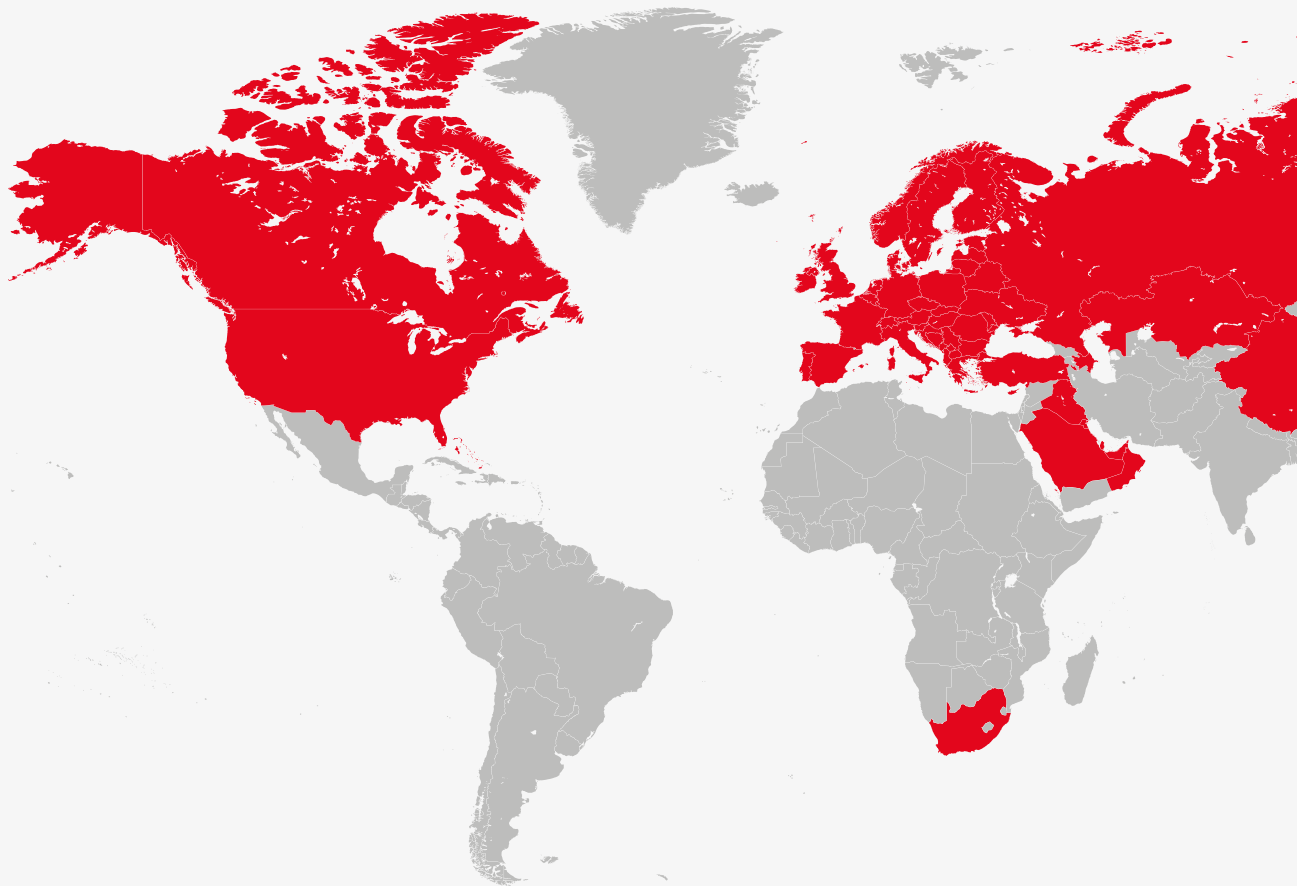


### Filigree profiles

The door may be tall and heavy, but its panels are just as slim as any of our elegant tilt-and-turn windows.



## The reliability of a big name



UNILUX ensures award-winning long-term progress

- by selecting the right partners and raw-material suppliers, and by being a member of leading institutions and associations:



UNILUX products meet international test and safety standards:



## Company info

---

### Publisher

UNILUX GmbH  
54528 Salmtal / Germany  
Telephone +49(0)6578/189-0  
Facsimile +49(0)6578/1880  
E-Mail [info@unilux.de](mailto:info@unilux.de)  
[www.unilux.de](http://www.unilux.de)



### Notes

The content of this catalogue is not legally binding and may be subject to technical changes as part of further developments or errors in the text, images or descriptions. We only allow images and text material – including excerpts – to be used upon request, and with our express written consent.

The image material used is for illustrative purposes. Differences in color are unfortunately unavoidable due to printing. The sample illustrations are not to scale.

© 2016, UNILUX GmbH. All rights reserved.



UNILUX headquarters, Salmtal

Internet access via the mobile QR code may incur costs dependent on the network operator and rate model selected.  
Photos: UNILUX, iStockphoto, Fotolia, Shutterstock

Pic 1: Architekturbüro Johannes Kraus, AU 1070 Wien, Architekturbüro Broß – Kurzenberger, DE 79100 Freiburg |  
Pic 2: Architekturbüro Richard Stihler, DE 77933 Lahr | Pic 3: Architekturbüro Hänggi, CH 4144 Arlesheim | Pic 4: OMP  
Gruppe Architektengesellschaft, DE 26180 Rastede | Pic 5: POP Fassadenberatung, DE 28876 Oyten

UNILUX GmbH  
54528 Salmtal / Germany  
Telephone +49 (0) 65 78 / 189 - 0  
Facsimile +49 (0) 65 78 / 18 80  
E-Mail [info@unilux.de](mailto:info@unilux.de)

[www.unilux.de](http://www.unilux.de)



WHERE QUALITY IS AT HOME

Member of the **WERU** Group